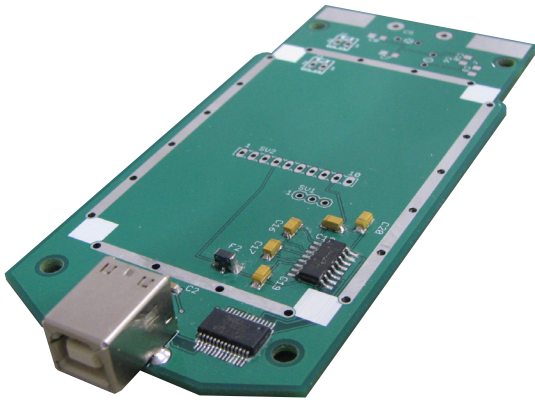




USB I/O Control Module *CM-200 Series*

Interface board allows for PC connection to various input and output devices with direct load connectivity



*Various sizes and models exist

USB I/O Control Module with added capability to drive electrical devices (i.e. lighting, motors and other loads)

The API CM-200 Series Provides:

- Standard, 0.250" quick connect terminals provided for EOM termination to motors, lighting and other loads
- Socketed ice cube relays for ease of maintenance or replacement of relay rating values (Model dependent, typical 4-8)
- Fuse holders integrated to protect specific loads
- LEDs for relay status indication
- Custom features available upon request (relays with specific load requirements, dimensions and mounting hole placement etc.)
- All the features of the CM-100 Series:
 - USB to I/O connectivity
 - External device power capability by splitting/ making available on board USB power
 - Compact size with OEM integration mounting holes
 - Up to four inputs allowed from external sensors (options exist for more I/O)
 - Up to eight outputs directed to allow/drive external device (options exist for more I/O)
 - Ready to go application program interface which is available to turn on outputs and to sense status inputs
 - Program your own- Create your own custom application program interface using the included STX command protocol
 - Designed to allow functionality specific to your request

Timing and Sequencing of Event Functions Made Easy!